



**2011 Carbon Cub SS**  
 Airframe Hours Since New: 1,084.1  
 Engine Hours Since New: 1,084.1  
**Price: \$205,000**

**AVIONICS:**

- Deluxe VFR Panel
- Garmin aera 560 Upgrade
- Garmin GTX 327 Transponder
- Vertical Speed Indicator
- Turn and Bank Indicator
- PM1200 Intercom Upgrade
- Artex Model ME-406 ELT
- Stratus ADS-B

**Engine & Propeller:**

- Catto 78" 54" Pitch Composite Propeller NLE
- Black prop with yellow tips
- Titan CC- 340 180 HP

**Exterior:**

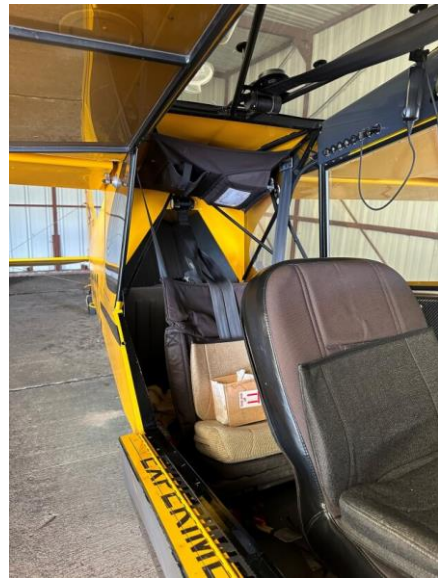
- Classic yellow paint scheme
- Lightning bolt tail art
- 12" N numbers
- 6:00 x 6 Tires and Wheels
- 3200 Type Steerable Tail Wheel
- Standard Gear

**Interior:**

- Standard Seats
- Lightweight Light/Strobe PKG



**MIKE SANSFIELD**  
 PH: +1 770 335 4745 MOBILE  
 EMAIL: MIKE@SWTAVIATION.COM



N426CC | Copyright by Mark Pasqualino | 2014-07-26 | KOSH | Airport-Data.com

**MIKE SANSFIELD**  
PH: +1 770 335 4745 MOBILE  
EMAIL: MIKE@SWTAVIATION.COM